

DPM® LANDMARK STRUCTURES® N SCALE BUILDING KIT



WILHELMI'S MERCANTILE #51600

INSTRUCTIONS

Read through instructions before beginning.

Use solvent-based plastic cement to glue parts. Plastic cement works by dissolving the surface of plastic and welding parts together. Be careful to avoid contact with detail on parts and visible areas on Clear Window Material. Always allow glue to set thoroughly before moving on to next construction step.

Prepare Building Parts

Wash parts in warm, soapy water, rinse and let dry. Use a hobby knife and sandpaper to remove excess plastic (flash and tabs) that occurred during molding process. **Flash:** Lightly scrape along edge of part (face cutting edge of blade opposite of scraping direction) and sand smooth. Do NOT sand or cut into detail on parts. **Tabs:** Score flush with part, snap off and sand smooth.

NOTE: Some Walls have alignment pins molded onto the backside to assist in proper alignment. Do not sand or remove alignment pins.

Chimney Backs

1. Sand bottom edge of Chimney Backs (516-5).
2. Align Chimney Backs with molded-in chimney fronts on Back Wall (516-3) and glue in place (**Fig. 1**). When glue is set, sand tops of Chimneys flat.

Front Wall Assembly

1. Front Wall (516-1) and Side Wall (516-2) have a 45-degree angle along edge where they join together (**Fig. 1**).
2. Align Walls (516-1) and (516-2) and keep bottom edges as level as possible. Use Roof as a squaring guide when aligning Walls.
3. Apply glue along inside seam. Hold Walls square until setting begins. Set aside when glue is set.

Back and Side Wall Assembly

1. Sand draft angle from both edges of Side Wall (516-4) and right edge of Rear Wall (516-3). Do not sand brick detail.
2. Butt Side Wall (516-4) against alignment pins on Back Wall (516-3) and keep bottom edges as level as possible (**Fig. 1**).
3. Glue in place and hold until setting begins. Use Roof as a squaring guide when aligning Walls. Hold Walls square until setting begins.

Paint Roof

Paint Roof before installing. Color suggestion: grimy black

Attach Front Wall Assembly to Back and Side Wall Assembly

1. Butt Back Wall Assembly (516-3) and (516-4) against alignment pins on Front Wall Assembly (516-1) and (516-2).
2. Apply glue along inside seams. Use rubber bands to keep Walls aligned while glue sets.

Level Building

On thumbtacked piece of 120-grit sandpaper, carefully sand bottom of building in a circular motion to level bottom edges, so it will sit level on layout.

Paint Building and Add Weathering

Apply a thin coat of primer before painting and let dry.

Airbrush: Use solvent-based, flat finish enamel paint.

Hand-brush: Use water-soluble, flat finish acrylic paint.

Aerosol: Use flat finish spray paint.

We recommend natural brick colors such as rust, tan or other earth tones. Paint door and window trim the same color as the brick or a contrasting color.

Weathering Tips

Add a realistic mortar-look to brickwork by painting on a concrete mortar wash (formula follows). Using a paintbrush, dab on small amounts of wash until desired look is achieved. Sponge off excess.

Formula: Mix 1-part acrylic paint (color suggestion: concrete or aged concrete), 12-parts rubbing alcohol, 8-parts water and 1 drop liquid dish soap.

Airbrush: Lightly spray thinned flat black paint (color suggestion: grimy black) to areas where natural discoloration can occur (near windows, chimneys, etc.).

Chalk: Rub a dark color of pastel chalk (color suggestion: gray, black, brown, etc.) on sandpaper to create a chalk dust. Using a paintbrush, dab chalk dust where discoloration can occur.

Roof Assembly

1. Test fit Roof (516-6) by sliding it under bottom of Chimneys from front of building (**Fig. 2**).
2. Set Roof underneath Chimney bottoms on Back Wall (516-3) and rest on alignment pins molded onto Front Wall (516-1).
3. Apply glue from underside of building.

Install Windows

1. Center Clear Window Material over backside of window on interior of building. Dab a tiny amount of glue around edges.
2. Cut a piece of Clear Window Material 7/8" x 2 1/4" and glue horizontally over first three fourth-floor windows on Front Wall (516-1). Glue remainder of this piece horizontally on windows directly below (first through third-floor). Glue a full sheet vertically over remaining windows on Front Wall (516-1). Trim sheet if necessary.
3. Glue a full sheet vertically to Side Wall (516-2). Trim sheet if necessary.
4. Glue two full sheets vertically, side-by-side to Back Wall (516-3). Trim sheet if necessary.
5. Glue one full sheet vertically to Side Wall (516-4). Trim sheet if necessary.

Finishing Touch

Give your building the illusion of being occupied. Place a piece of black construction paper diagonally from corner-to-corner inside the building to block the light.

Fig. 1

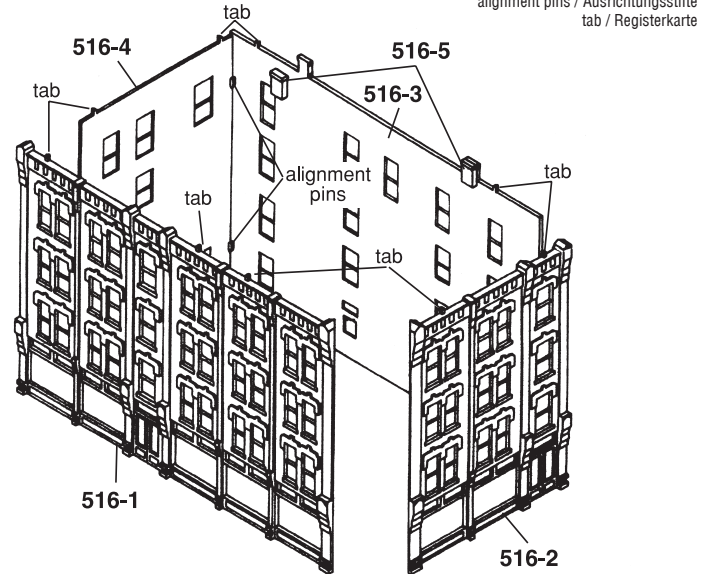
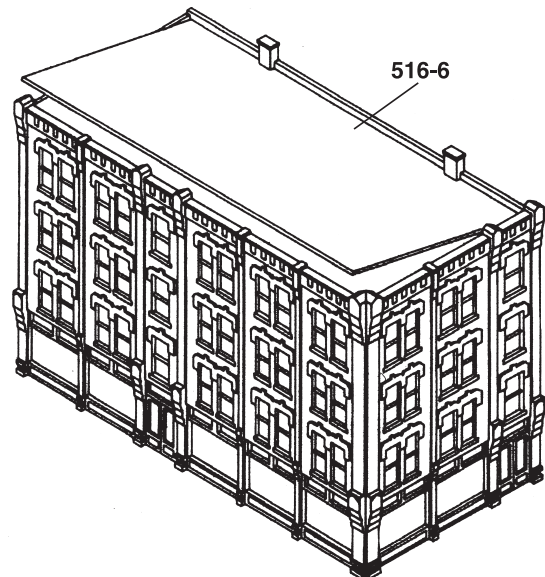


Fig. 2



Create interest on your layout. Add lights to your buildings quickly and easily using the Woodland Scenics® Just Plug® Lighting System.

CAUTION: Cutting tools recommended. Use with care. / ACHTUNG: Schneidwerkzeuge empfohlen. Mit Vorsicht benutzen.

MODELING AND CARE INFORMATION This kit suggests the use of materials that may stain or cause damage. Take care to cover project area and clothing appropriately. Follow recommendations for use and cleanup.

Model making product. Not a toy! Not suitable for children under 14 years! / Produit pour le modélisme. Pas un jouet! Pas adapté aux enfants de moins de 14 ans! / Producto para modelismo. No es un juguete! No adecuado para niños menores de 14 años! / Modellbauteil. Kein Spielzeug! Nicht geeignet für Kinder unter 14!